

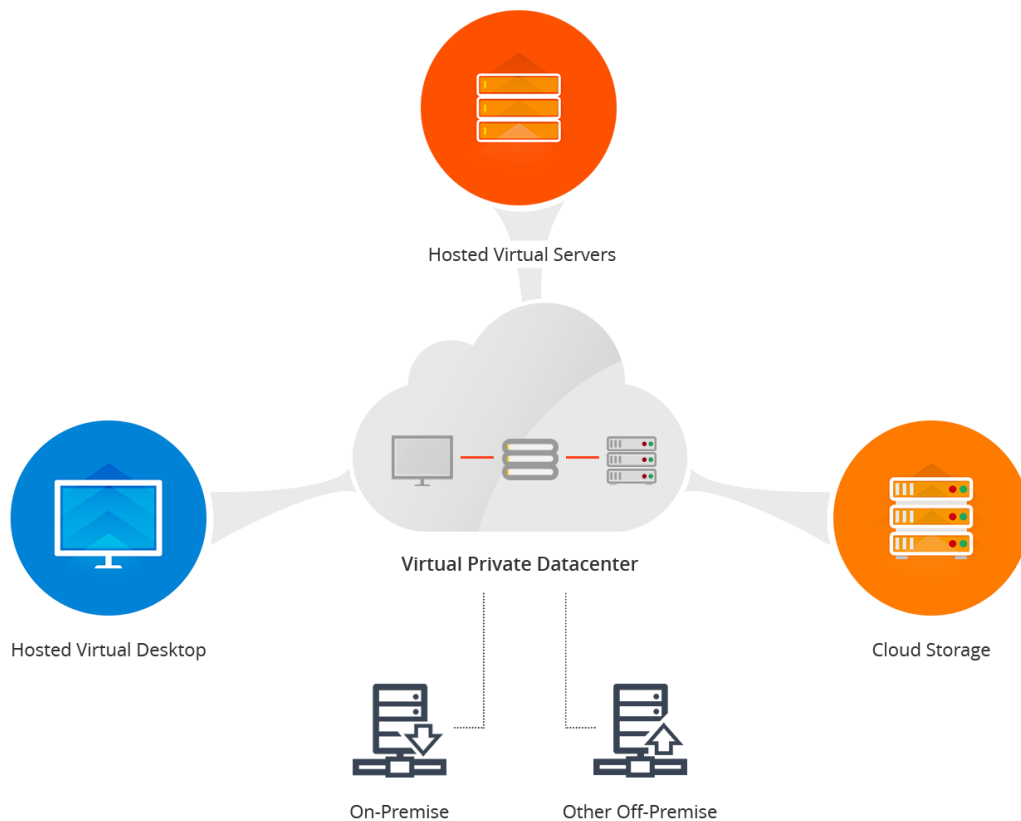


Our Cloud Orchestration & Management Platform

www.dincloud.com

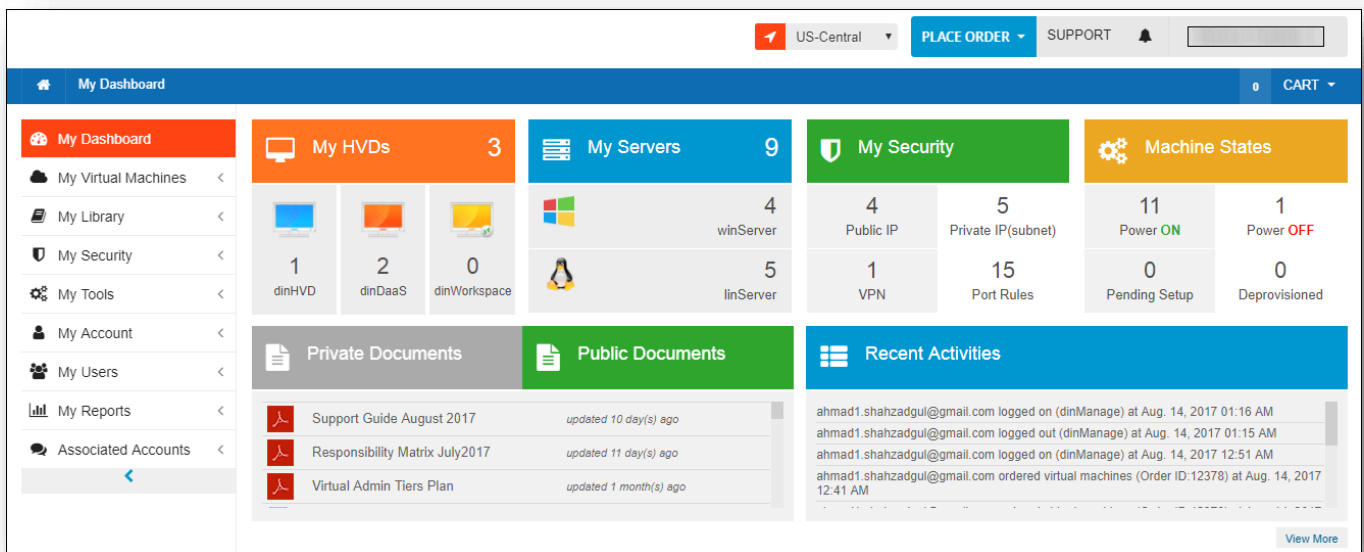
dinCloud's Control Panel, dinManage is an online application that enables customers to configure virtual data centers securely in the cloud, giving them complete control of their own environment - including desktops, servers and network security resources.

The Control Panel allows customers to directly and efficiently manage their own resources. Its automated provisioning system makes it cost and time efficient. This arms customers with tools to improve their business and become more competitive.



Benefits

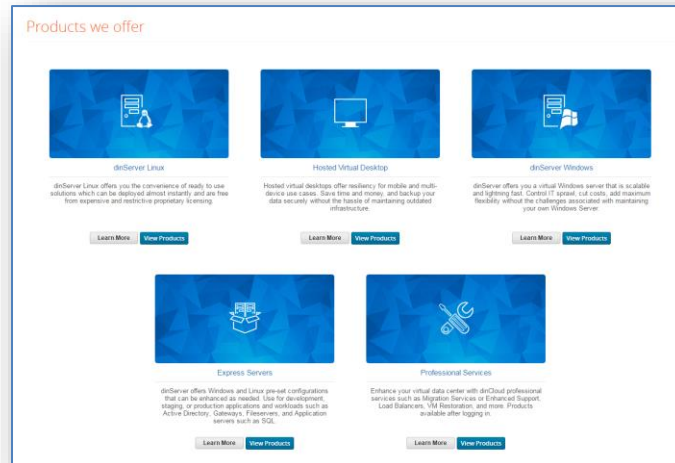
- Control of your virtual private data center
- 24 x 7 visibility of your virtual environment through the online web interface
- Simplified access to various cloud infrastructure management operations
- Public, private and hybrid cloud designing capability
- Enhanced security of your environment through '2 Factor Authentication'
- Remain up to date with enhancements through Announcements



Automated Provisioning/De-provisioning



- Reduce time required to add virtual desktops and virtual servers to your infrastructure to minutes
- Instantly duplicate VMs by provisioning clones of existing VMs
- Comfortably configure virtual machine resources such as RAM, CPU and DISK space
- De-provision virtual machines with a single click
- Restore machines within 48 hours of de-provisioning, if required
- Effortlessly set the time zone for each VM at the time of provisioning



Data Center Operations Supported



- Provision/De-provision Virtual Hosted Desktops and Virtual Hosted Servers
- Convert an existing VM to template
- Provision security and networking (VPN, IPs, and firewall)
- Configure virtual machine, hardware and software specifications
- Upgrade/Downgrade machines virtually at any time
- Power on/off individual virtual machines using a simple toggle button
- Access virtual machines remotely as an admin user, through Remote Console
- Set-up passwords for remote console if required
- Add, delete and manage networks
- Assign friendly names to networks
- Switch machines between internal networks
- Create and provision new VMs by cloning existing VMs
- Monitor and view detailed activity logs for all VMs in your environment
- Configure time zone settings for all VMs when provisioning



dinDaaS Premier

dinDaaS-Premier is a vigorous hosted virtual desktop for mission critical workloads for the modern office using resource hungry applications. Running on Windows Operating System and compatible with Windows-based applications. Runs through Chrome browser from multiple devices such as Windows, Mac, Android.

[Configure & Buy](#)

What's Included:

Each dinDaaS machine is a personalized workspace for an individual user. This provides a persistent Windows desktop experience and personalized settings, applications, and documents and files. ...



dinHVD Silver

dinHVD-Silver is a hosted virtual desktop to run simple workloads. Built to support access from multiple devices such as Android, Chrome, HTML 5, Windows, and Linux. Includes capabilities to run multiple screens with a persistent, personalized desktop for each user.

[Configure & Buy](#)

What's Included:

Each dinHVD is a personalized workspace for an individual user. This provides a persistent Windows desktop experience and personalized settings, applications, and documents and files. ...

dinManage – Cloud Orchestration & Management



My Virtual Machines

My HVDs

My Dashboard

My Virtual Machines

My HVDs

My Servers

My Deprovisioned

My Library

My Security

My Tools

My Account

My Users

My Reports

Associated Accounts

My Virtual Machines

MY HVDs

Assign VM to Group

Bulk Actions

Show 10 entries

Filter All

Search:

| Name | Specifications | Creation Date | Status | Actions |
|---|---------------------------------|---------------|--------|---------|
| <input type="checkbox"/> dinc-hd160 Ali Din New HVD adin@dinccloud.com | CPU: 3 MEMORY: 4GB DISK: 60GB | Sep 09, 2016 | ON | |
| <input type="checkbox"/> dinc-hd162 None ameena@bigpicturefa.com | CPU: 6 MEMORY: 8GB DISK: 100GB | Nov 30, 2016 | | |
| <input type="checkbox"/> dinc-hd163 John Holland 2012 | CPU: 4 MEMORY: 8GB DISK: 120GB | Jan 06, 2017 | | |
| <input type="checkbox"/> ord-veeam-8 | CPU: 4 MEMORY: 6GB DISK: 100GB | Nov 23, 2015 | | |
| <input type="checkbox"/> ord-veeam-9 | CPU: 4 MEMORY: 6GB DISK: 100GB | Nov 23, 2015 | | |
| <input type="checkbox"/> CHI-hd158 Actual VM dinc-hd158 adin@dinccloud.com | CPU: 8 MEMORY: 16GB DISK: 150GB | Jul 25, 2016 | | |

Remote Console

Power OFF

Restart

Upgrade/Downgrade

Change Password

Switch Network

Activity Logs

Deprovision

Unassign dinDaaS

Convert to Template

Clone this VM

Task Progress Bar

© Powered By dinCloud 2017. [Terms and Conditions](#) | [Privacy Policy](#) | [About Us](#) | [FAQs](#)

Active Directory



- Configure the Active Directory server in the virtual data center using a quick wizard based approach
- Create domain(s) in your dinCloud virtual private data center just by filling out a simple form
- View all available Active Directories
- Register your cloud environment to an Active Directory in an External Domain
- Join/Unjoin virtual machine(s) to an existing domain
- View Active Directory Logs to monitor and track all AD related operations in Activity Logs.

Active Directory

Step 1 Domain Selection

Select an Active Directory action from the following options:

☒ Register my On-Premise Active Directory to dinManage

☐ Create a new Active Directory in my dinCloud Datacenter

☐ Register an existing Active Directory to my dinCloud Datacenter

Continue

Active Directory

Step 2 Domain Information

Please provide the following information:

Select the network that is connected to your External Active Directory server via VPN:

Please select ▼

FQDN of the Forest: *

Domain IP : *

Ping Domain IP for access verification: ☒

Back Submit

Active Directory

Step 1 Domain Selection

Select an Active Directory action from the following options:

- ☐ Register my On-Premise Active Directory to dinManage
- ☒ Create a new Active Directory in my dinCloud Datacenter
- ☐ Register an existing Active Directory to my dinCloud Datacenter

Continue

Active Directory

Step 2 Domain Information

Please provide the following information:

Select the Server you want to turn into an Active Directory Domain Controller:

Please select ▼

Note: If you don't see a Windows server in this list then it might be missing the latest dinCloud Agent, having internet connectivity problems, may already be an Active Directory server or another AD task for it may already be in progress.

FQDN of the Forest: *

Net BIOS Name: *

Safe Mode Password: *

Confirm Password: *

☒ Install DNS

☒ Global Catalog

Back

Submit

Active Directory

Step 1 Domain Selection

Select an Active Directory action from the following options:

- ☐ Register my On-Premise Active Directory to dinManage
- ☐ Create a new Active Directory in my dinCloud Datacenter
- ☒ Register an existing Active Directory to my dinCloud Datacenter

Continue

Active Directory

Step 2 Domain Information

Please provide the following information:

Select the Active Directory Server:

Please select

FQDN of the Forest:

Domain IP :

Back

Submit

ACTIVE DIRECTORY

Active Directory Listing Page

Add New

Show 10 entries

Search:

| | Domain Name | VM Name | IP | AD Type | User | Groups | Status | Actions |
|--|--------------|-----------|--------------|--------------|------|--------|--------|---|
| | test.local | Depl-hs50 | 172.18.1.25 | In Cloud Add | None | None | Ready | |
| | dincloud.com | Depl-hs46 | 192.168.0.36 | In Cloud Add | None | None | Perc | <div>Delete AD Join / Unjoin Machines</div> |

Active Directory

User Name

Password

Unjoined Machines

Depl-hs37
Depl-hs38
Depl-hs39
Depl-hd5
Depl-hs40
Depl-hd6
Depl-hd7
Depl-hd8
Depl-hd10

Joined Machines

Depl-hs41
Depl-hd11

>
<
>>
<<

Confirm

Virtual Private Firewall



- Leverage a dedicated virtual private firewall to manage IP addresses, Ports and VPNs
- Manage public and private IP addresses (subnets)
- Add, remove and manage up to 5 subnets
- Enable port forwarding and NAT for virtual servers
- Create IPsec VPN tunnels between dinCloud and on-premise data centers, to enable a Hybrid Cloud
- Activate and manage an Access Control List (ACL) to effectively secure your virtual environment
- Add, remove and Manage Domain Name and DNS IP, within the DHCP server, without reaching out to Support teams

| IP ADDRESSES | | |
|--|----------------------|---------|
| <p>dinManage enables you to manage your Public and Private IPs through this screen. Public IPs allow you access to your virtual machines directly over the internet while Private IPs are your sub networks within your virtual private datacenter. These features are only available when you have your dedicated firewall provisioned in this account. The virtual firewall gets provisioned with your first order automatically to secure your virtual environment.</p> | | |
| Public IP | Buy IP | |
| Default IP Address | Actions | |
| 199.187.131.129 | | |
| IP Addresses | Actions | |
| 199.187.131.145/24 | | |
| Private IP (Up to 5 Networks allowed) | | |
| Network Name | Default Start/End IP | Actions |
| Other Network | 10.1.1.2/10.1.1.126 | |
| Network Name | Subnet | Actions |
| Shahzad Network | 10.0.0.0/23 | |

Add Port

Public IP
199.187.129.209/23

Destination IP
dinc-hs8 - 10.253.26.50

Protocol
UDP

Port

Input a single port no, comma separated list and/or ranges
Example: 3389 or 3389,22,23-30 or 23-30

Advanced Settings

Confirm

Cancel

Add VPN

VPN Name/Location

Source VPN IP
199.187.129.50

Destination IP

Pre-Shared Key

Show pre-Shared key

ESP Policy
Select

IKE Policy
Select

Local Subnet
dmz - 172.16.1.0/24

Remote Subnet

Confirm

Cancel

My Library



- Convert a VM to a template, and provision new VMs based on the same configuration
- Take your cloud in your own hands. The simple one-click operation allows you to be less dependent on Support teams for creating working templates
- Remotely access your templates to run updates, or to add or remove software
- Significantly reduce the time required to configure your virtual machines
- Easily create and manage product bundles.
- Manage ISO and mount/unmount anytime to install on your VMs.


ISO MANAGEMENT

This section comprises of software ISOs that you may mount on your VMs for installation, when required.

| Available ISOs | | ISO Mounted Machines | |
|----------------|--|----------------------|---------------------------|
| Sr.# | Available ISOs | No. of VM Mounted | Actions |
| 1 | SQLServer2008-Testing | 0 | Mount ISO |
| 2 | Office2016_ProfessionalPLus64x | 0 | Mount ISO |
| 3 | Microsoft Office Professional Plus 2013 (64-bit) | 0 | Mount ISO |
| 4 | Microsoft Office Professional Plus 2016 (32-bit) | 0 | Mount ISO |
| 5 | Microsoft Office Professional Plus 2016 (64 bit) | 0 | Mount ISO |
| 6 | Microsoft Office Standard 2013 (32-bit) | 0 | Mount ISO |

PRODUCT BUNDLES

This section comprises of product bundles.




Test Bundle 1

sdds

[more](#)

[Configure & Buy](#)



Test Bundle 2


dsdsds

[more](#)

[Configure & Buy](#)

VM TEMPLATES

This section comprises of all your templates, which may be used to provision virtual machines exactly per your desired requirement. To create your own templates, click the 'Convert to Template' option in the 'Actions' column against the machine of your choice, in the 'My HVDs' and 'My Servers' sections.




Nutanix -Windows 2012 Server 64-Bit

This is KVM machine converted to template for Nutanix, Windows 2012 Server 64-Bit, Windows 2012 Server 64-Bit

[more](#)

Creation Date : 2017-Sep-12
 Converted From : Ahma-hs96
 Status : poweredOff
 OS : Windows Server 2012 R2

[Configure & Buy](#)



Nutanix-KVM 2016 Template windows 2016

Windows 2012 Server 64-Bit

[more](#)

Creation Date : 2017-Sep-12
 Converted From : Ahma-hs97
 Status : poweredOff
 OS : Windows Server 2016 R2

[Configure & Buy](#)

Account Activity Logs



- Secure your cloud by logging user activity
- View a detailed status and activity snapshot of any VM and perform management operations from a single page
- Maintain an audit trail of all actions on all VMs by all internal and external users in your environment
- Investigate task failures and other incidents without waiting for support
- Use powerful search feature to track an incident and extract only relevant records
- Export and print VM monitoring logs in various formats
- Easily view status of VM tasks with backend processing requirements, inside a floating Task Progress Bar, which can be accessed from any dinManage page

| ACCOUNT ACTIVITY | | | | | | |
|------------------------|-------------------------------|---------------|-----------------|--|-------------------|-----------|
| Show 25 entries | | Export To CSV | | Search Filters | | |
| Time Stamp (UTC) | Action Performed By | IP Address | Action Category | Action Performed | Object | Status |
| Sep. 19, 2017 09:38 PM | ahmadshahzad.chandu@gmail.com | 117.20.23.66 | vm operations | joined machines to AD | ChAn-hd3 | Failed |
| Sep. 19, 2017 09:38 PM | ahmadshahzad.chandu@gmail.com | 117.20.23.66 | vm operations | joined machines to AD | ChAn-hd2 | Failed |
| Sep. 19, 2017 09:22 PM | ahmadshahzad.chandu@gmail.com | 117.20.23.66 | vm operations | joined machines to AD | ChAn-hs40 | Completed |
| Sep. 20, 2017 04:18 AM | ahmadshahzad.chandu@gmail.com | 117.20.23.66 | vm operations | remote consoled into virtual machine | VM Name:ChAn-hs44 | Completed |
| Sep. 20, 2017 03:57 AM | dinCloud Monitoring Service | None | task scheduler | performed powered on virtual machine operation using scheduler | VM Name:ChAn-hs34 | Failed |

dinManage – Cloud Orchestration & Management

My Dashboard

My Virtual Machines <

My Library <

My Security <

My Tools <

My Account <

My Users <

My Reports <

Associated Accounts <

My HVDs 0

0

dinHVD

0

dinDaaS

0

dinWorkspace

My Servers 4

0

winServer

4

linServer

My Security

4

Public IP

3

Private IP(subnet)

0

VPN

5

Port Rules

Machine States

4

Power ON

0

Power OFF

0

Pending Setup

1

Deprovisioned

Private Documents

Public Documents

Support Guide October 2017

updated 1 day(s) ago

Responsibility Matrix July2017

updated 2 month(s) ago

Virtual Admin Tiers Plan

updated 3 month(s) ago

Recent Activities

ahmad1 shahzadgul@gmail.com deleted port rule (External IP:192.168.10.40) at Oct. 20, 2017 10:02 AM

ahmad1 shahzadgul@gmail.com deleted port rule (External IP:192.168.10.40) at Oct. 20, 2017 10:01 AM

ahmad1 shahzadgul@gmail.com deleted port rule (External IP:192.168.10.40) at Oct. 20, 2017 10:01 AM

Task Progress Bar

| Time Stamp | Action Performed By | Action Performed | Object | Status |
|------------------------|-----------------------------|-------------------------------|---------------------------|-----------|
| Oct. 20, 2017 10:02 AM | ahmad1.shahzadgul@gmail.com | deleted port rule | External IP:192.168.10.40 | Completed |
| Oct. 20, 2017 10:01 AM | ahmad1.shahzadgul@gmail.com | deleted port rule | External IP:192.168.10.40 | Completed |
| Oct. 20, 2017 10:01 AM | ahmad1.shahzadgul@gmail.com | deleted port rule | External IP:192.168.10.40 | Completed |
| Oct. 20, 2017 10:00 AM | ahmad1.shahzadgul@gmail.com | deleted port rule | External IP:192.168.10.40 | Completed |
| Oct. 19, 2017 07:46 AM | ahmad1.shahzadgul@gmail.com | deprovisioned virtual machine | VM Name:Ahma-hd146 | Completed |

Only actions with backend processing requirements are displayed in this list.

View More

User Management



- Create user accounts by either creating a user profile yourself or by sending an email invitation
- Create access profiles by grouping a set of application access permissions
- Use access profiles to create a role based application environment
- Limit any user in your environment to a specified set of permissions
- Perform general user account administration, such as, change passwords, edit user profiles, deactivate or activate user accounts, delete user accounts, etc.
- Create user groups by selecting a set of users, with a special job function, for instance
- Restrict user groups to a specific set of your cloud resources by assigning selected VMs to a group
- Allow users of the same user group to view and manage each other's virtual resources

Add User

Create User | **Invite User**

Create User

To create a new user fill the form below.

First Name :

Last Name :

Email Address :

Phone Number :

Access Profile :

Create **Cancel**

Invite User

To invite a new user fill the form below.

Enter Email Address :

You can invite multiple users. Use comma(,) to separate emails.

Access Profile :

Note: All users will be assigned the same access profile. You may change their assigned profiles, once those accounts have been registered.

Send Invitation **Cancel**

Add Group

To add a new Group fill the form below.

Group Name :

Description :

Add User to Group

Sub Users | Users in Group

s_gu021@dinccloud.com >>

subuser_number2@dinccloud.com <<

subuser_number121@dinccloud.com

zuhaib_bu02001@yahoo.com

* Left click your mouse button on the User to move it in, and out of the group.

Create **Cancel**

ADD PROFILE

Profile Name :

Description :

My HVDs

My Servers

My Security

My Deprovisioned

My Tools

My Reports

My Account

Associated Accounts

Place Order

My Library

My Users

☒ Select All

☒ Can View

☒ Can View

☒ Manage Users

☒ Can View User Profiles

☒ Manage User Profiles

☒ View User Groups

☒ Manage User Groups

Cancel

Save

Assign VM to Group

Assign virtual machines to a User Group, and restrict the access of the group members to the selected machines only.

Groups:

HVDs Group

Manage Groups

Users in selected group: subusershahzad Gultest - shahzadgultestdelete@gmail.com

Add VM to Group

VM List

Offi-hs28 - None-servers

Offi-hs34 - None-servers

>>

VM in Group

Offi-hs41 - None-servers

<<

* Left click your mouse button on the VM to move it in, and out of the group.

Submit

dinCloud.com | Ph: 424-286-2300

2 Factor Authentication



- Strengthen and work with greater flexibility in managing account security
- Drastically reduce probability of an Internet attacker gaining access to an account
- Lower total costs of disruption
- Manage 2 Factor authentication settings using a dedicated administration page
- Activate or deactivate 2 Factor authentication for any of your user accounts, at any time
- Choose from a range of options for your security token receiving methods
- Set or modify your default security token receiving method, at any time, even while logging in to your account
- Allow your users to configure 2 Factor authentication settings, by enabling the relevant permission for a user

Two Factor Authentication [Back to My Profile](#)

Activate two factor to ensure the security of your virtual environment

As always, when you log in to dinCloud, you'll enter your email address and password.

You'll need to enter an additional token code from your email or mobile device.

Once you enter the token code on the website, you'll be logged in to dinCloud portal.

☐ Enable Two factor authentication for my login

Default Method: ☒ I will select at login

- ☐ Call +1 232-323-2323
- ☐ Email js@acmeinc.com
- ☐ Text/SMS +1 232-323-2323

☐ Enable Two-Factor authentication for all users in my account.
(If not selected, users will be able to manage authentication settings for their accounts)

[Save Settings](#)

We take your account security seriously!

Please select how would you like to receive the security token.

Method: ☒ Email cxxxxx@jsinvest.cxxxxx

- ☐ Phone call +1 xxxx5646
- ☐ Text message +1 xxxx5646

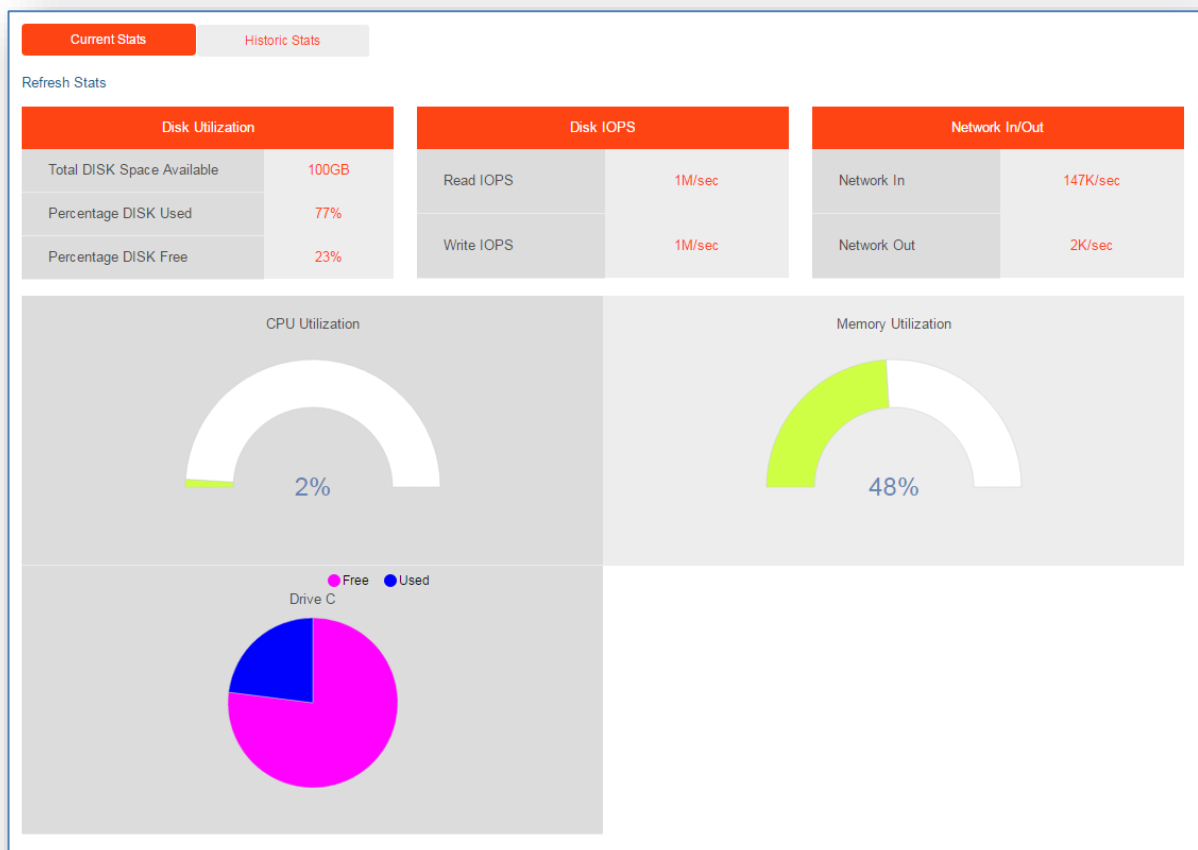
☐ Remember this method and don't ask me again.

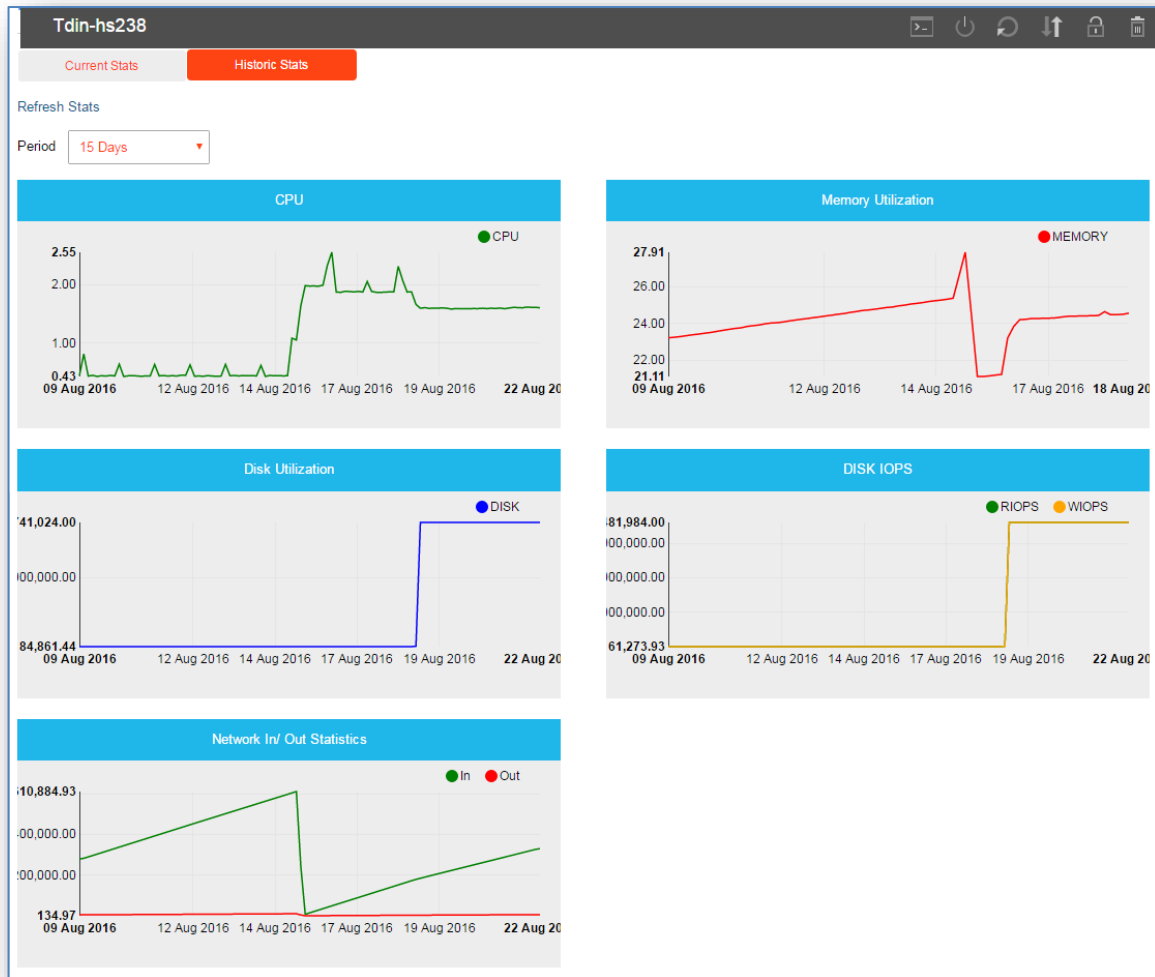
[Next](#)

VM Analytics and Monitoring



- Grab and view real-time VM stats within dinManage
- The stats will include the utility and availability of CPU, Memory, Disk usage (in case of multiple drives, the stats display separately for each drive), disk IOPs and Network in and out time
- Complex data analysis presented in easy to understand reports with graphics, maps and charts
- Set up usage thresholds on the specific virtual machine elements, and receive email alerts when these thresholds are reached
- Set alert thresholds on VM elements such as RAM, CPU, Disk, Network In/Out, Disk IOPs
- Select from a wide range of alert conditions available for each element
- Set up VM to automatically restart or shut down once a VM element breaches a specified threshold





Create Alert

Please fill in the information below to create your custom Trigger Alerts for the desired machine.

When the average: RAM utilization | Is: Above | 99 % | For consecutive: 5 min

☒ then send an email to sgul@dincloud.com | after every: 01 H | 00 M

☒ Take an action: Restart

Note: Multiple email addresses may be added by separating with commas.

Update **Cancel**

| Trigger | Condition | Warning | Condition Length | Email | Action | Status |
|------------------|-----------|---------|------------------|-------------------|-----------|---------|
| Network IN speed | above | 9 % | 5 min | sgul@dincloud.com | Power Off | Enabled |
| RAM utilization | above | 99 % | 5 min | sgul@dincloud.com | Restart | Enabled |

Disabled Edit Remove

Task Scheduling



- Schedule basic VM operations to run automatically on the scheduled date and time
- The operations that may be scheduled include: Power On, Power Off, Restart, Upgrade/Downgrade
- Schedule tasks to run once or set up recurring tasks which run every day or after a specified period
- Generate email alerts when a scheduled task is initiated
- Set up task scheduling on multiple VMs at the same time

VM TASK SCHEDULER

Schedule a Task

Show 5 entries

Search:

Task Label

Task

Creation Date

No of VMs

Task Type

Next Scheduled

Actions

Ahma-hs44 Task1

This task has run 0 time(s)

Power ON

Oct 25 2017

1

Non-Recurring

Oct 25 2017 09:15 AM

VM Name

VM Label

Actions

Ahma-hs44

Development Server Solus

Delete

Edit

Schedule a Task

Select Task:

Select Task

Task Label:

Select Date and Time:

Select Date and Time

☐ Enable Recurring Task

☐ Send Task Initiation Email

Select Virtual Machine

All Virtual Machines

Tdin-hd63

Tdin-hd67

Tdin-hd68

Tdin-hd70

Tdin-hd83

>>

<<

Selected Virtual Machines

* Left click your mouse button on the VM to move it in, and out of the Task Scheduler.

Schedule

Bulk VM Operations

- Allows you to perform certain basic virtual machine operations on multiple machines in bulk
- The operations that may be performed include: Power On, Power Off, Restart, Deprovision
- Single click operation allows you to reduce task complexity and increase efficiency

The screenshot shows the 'My Virtual Machines' section of the dinManage interface. A red arrow points to the 'Bulk Actions' dropdown menu, which is open and displays the following options: Power ON, Power OFF, Restart, and Deprovision. The main table lists several VMs with their specifications and status.

| Name | Specifications | Creation Date | Status | Actions |
|-----------------------------------|------------------------------------|---------------|--------|---------------------------|
| dinc-hs50 Zookeeper Opentsdb Read | CPU: 4 MEMORY: 4GB DISK: 80GB | Aug 30, 2016 | OFF | [Settings] [Bulk Actions] |
| dinc-hs53 Zookeeper Opentsdb Read | CPU: 4 MEMORY: 4GB DISK: 80GB | Aug 30, 2016 | ON | [Settings] [Bulk Actions] |
| dinc-hs54 Opentsdb Write | CPU: 4 MEMORY: 4GB DISK: 80GB | Aug 30, 2016 | OFF | [Settings] [Bulk Actions] |
| dinc-hs56 Opentsdb Write | CPU: 4 MEMORY: 4GB DISK: 80GB | Aug 30, 2016 | OFF | [Settings] [Bulk Actions] |
| dinc-hs57 Data Node | CPU: 6 MEMORY: 4GB DISK: 250GB | Aug 30, 2016 | ON | [Settings] [Bulk Actions] |

The screenshot shows the 'My Virtual Machines' section of the dinManage interface. The 'Bulk Actions' dropdown menu is still open. Below the VM list, there is a 'Task Progress Bar' showing the progress of various tasks.

| Time Stamp | Action Performed By | Action Performed | Object | Status |
|------------------------|---------------------|-----------------------------|--------------------|-----------|
| Jun. 21, 2017 02:41 AM | dinCloud Support | ordered virtual machines | Order ID:12046 | Completed |
| Jun. 12, 2017 01:36 PM | dinCloud Support | released IP | IP:198.246.190.245 | Completed |
| Jun. 12, 2017 01:33 PM | dinCloud Support | purchased IP | IP:198.246.190.245 | Completed |
| May. 26, 2017 12:44 AM | dinCloud Support | ordered virtual machines | Order ID:11903 | Completed |
| May. 10, 2017 11:50 AM | dinCloud Support | powered off virtual machine | VM Name:dinc-hs21 | Completed |