



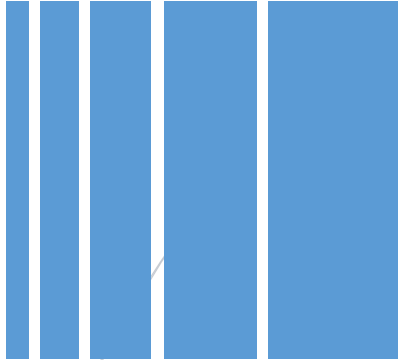
www.dincloud.com

dinWorkspace

End User

Guide



A decorative graphic consisting of five vertical bars of varying heights and widths, colored in shades of blue and white, arranged in a row.

dinHVD 2.0 End User Guide

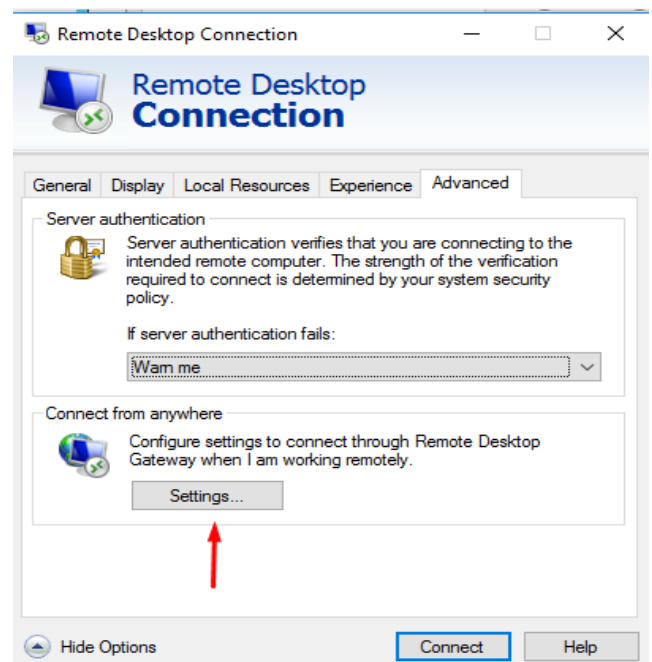
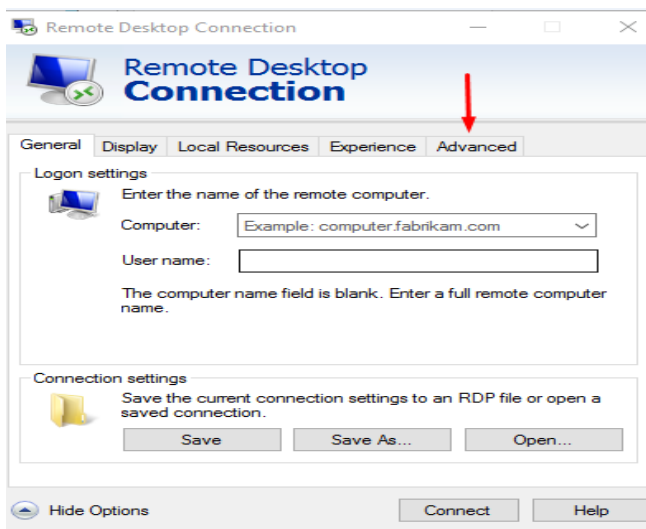
Connecting Using Windows



Connecting to dinWorkspace Using a Remote Desktop Client

Connecting to dinWorkspace using Remote Desktop Client on a Windows OS

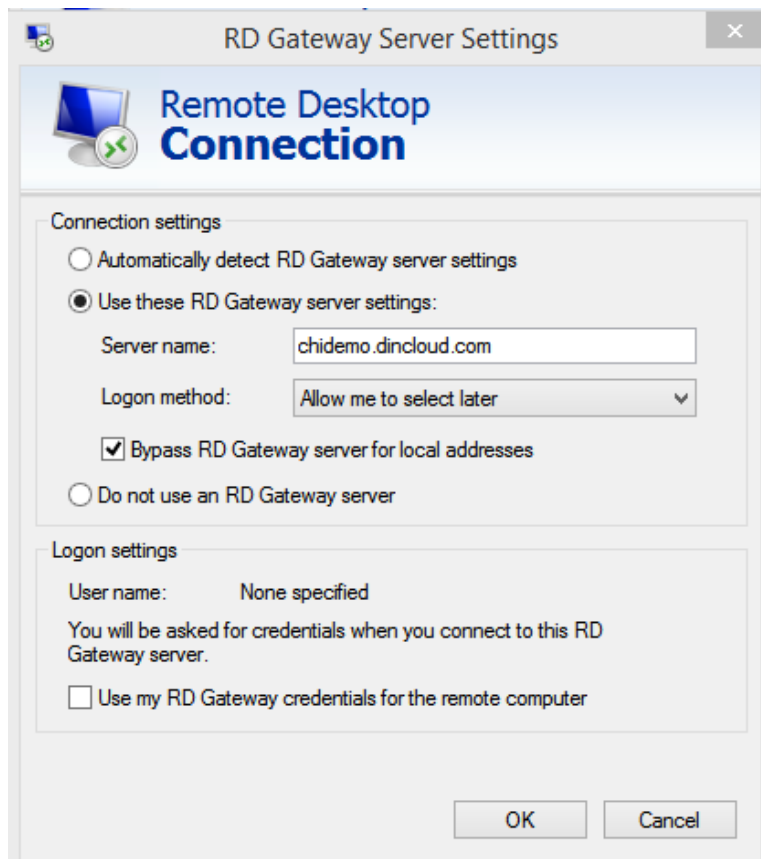
1. Open the Microsoft RDP Client from your Windows machine and click on the advanced settings. In the advanced settings, select **Connect from Anywhere**.





Connecting to dinWorkspace Using a Remote Desktop Client

2. Select **Use These RD Gateway Server Settings** and enter the website URL: `chidemo.dincloud.com`. Then click OK.



RD Gateway Server Settings

Remote Desktop Connection

Connection settings

☐ Automatically detect RD Gateway server settings

☒ Use these RD Gateway server settings:

Server name:

Logon method:

☒ Bypass RD Gateway server for local addresses

☐ Do not use an RD Gateway server

Logon settings

User name: None specified

You will be asked for credentials when you connect to this RD Gateway server.

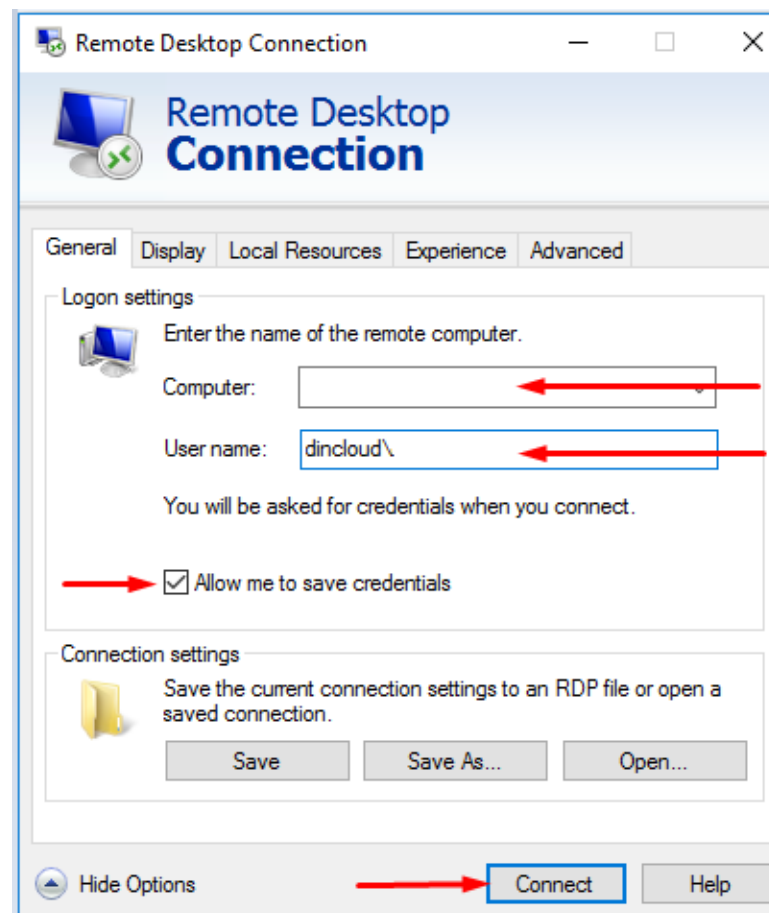
☐ Use my RD Gateway credentials for the remote computer

OK Cancel



Connecting to dinWorkspace Using a Remote Desktop Client

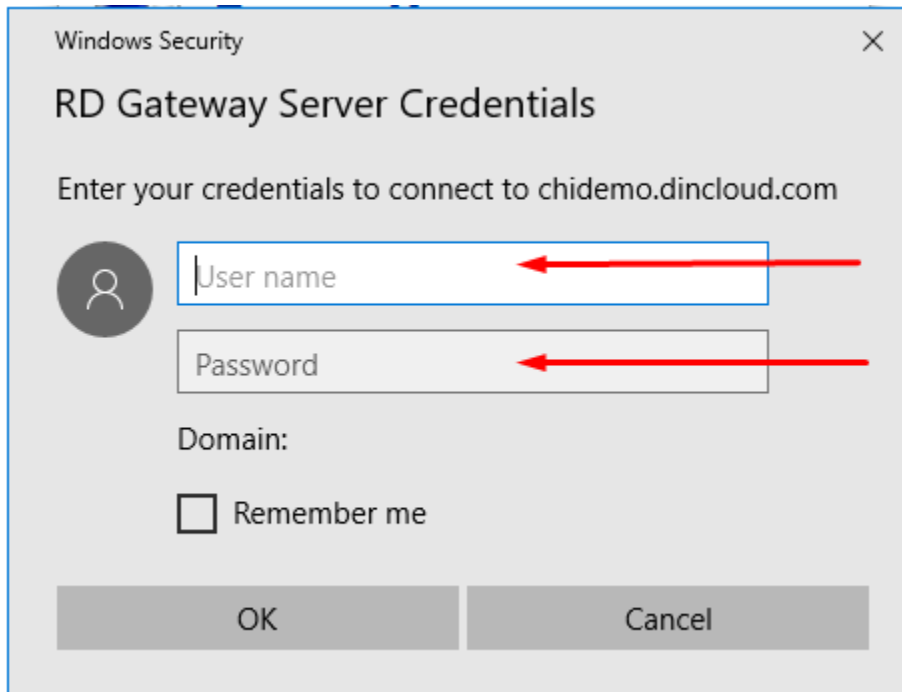
- Now go to the general settings and enter the computer name and dinCloud\username provided by dinCloud. Then click Connect.





Connecting to dinWorkspace Using a Remote Desktop Client


4. Once you connect, a new window will pop up asking for the username and password provided by dinCloud. It will take a few moments to connect to your dinWorkspace.



Windows Security

RD Gateway Server Credentials

Enter your credentials to connect to chidemo.dincloud.com



Domain:

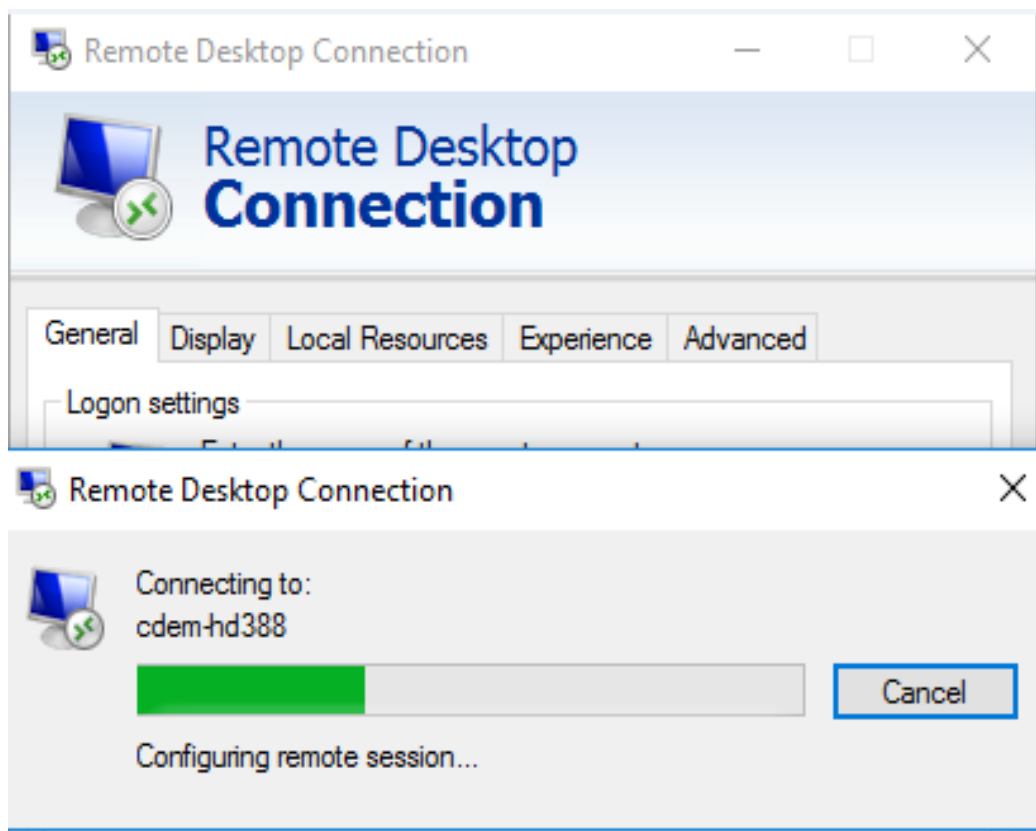
☐ Remember me

OK Cancel



Connecting to dinWorkspace Using a Remote Desktop Client

5. After entering the credentials, you will be connected to your dinWorkspace. Ignore any certificate warnings that may appear.





Connecting to dinWorkspace Using a Remote Desktop Client



Need Assistance?

Log in to our support portal support.dinCloud.com to open a ticket. You can then track the status of your ticket and view our self-service knowledge base.