



[www.dincloud.com](http://www.dincloud.com)

# dinWorkspace

## End User

## Guide



A decorative graphic consisting of five vertical bars of varying heights and widths, colored in shades of blue and white, arranged in a row.

# dinWorkspace End User Guide

Connecting Using MAC



## Connecting to dinWorkspace Using Mac

Connecting to dinWorkspace using Apple's  
MAC

1. Download the Microsoft Remote Desktop app from iTunes



### Microsoft Remote Desktop 4+

With the Microsoft Remote Desktop app, you can connect to a remote PC and your work resources from almost anywhere. Experience the power of Windows with RemoteFX in a Remote Desktop client designed to help you get your work done wherever you are.

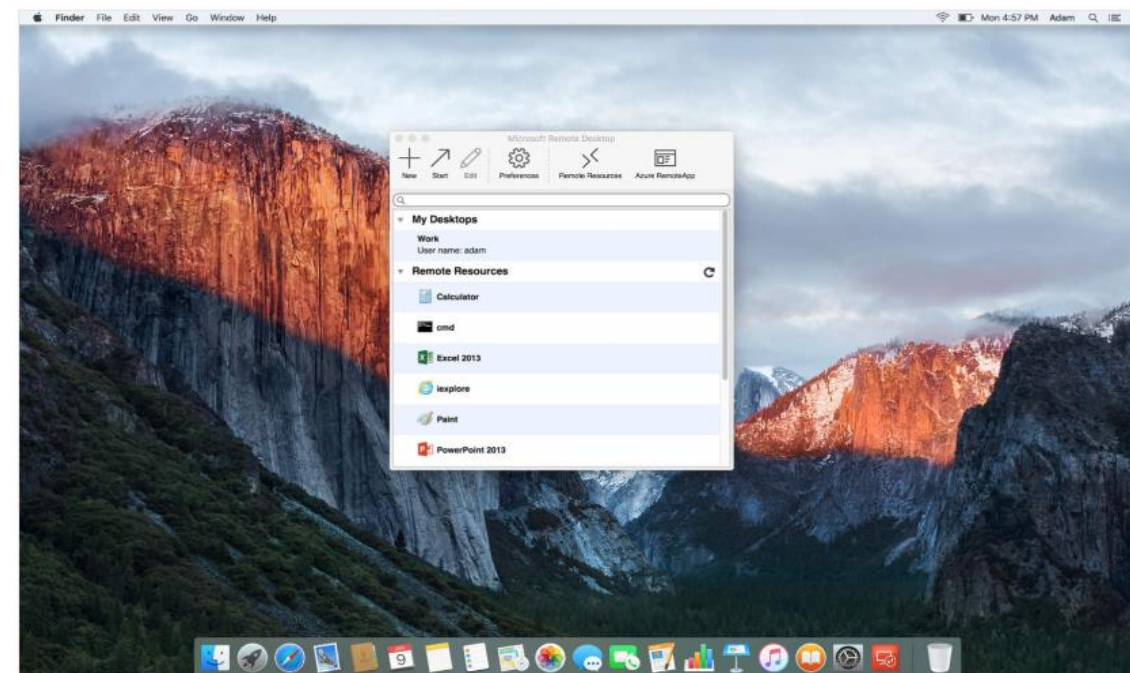
...

...More

#### What's New in Version 8.0.38

- The list of new resolutions wasn't showing up when you upgraded from version 8.0.36.
- Adobe applications were crashing when you tried to use them as RemoteApps....

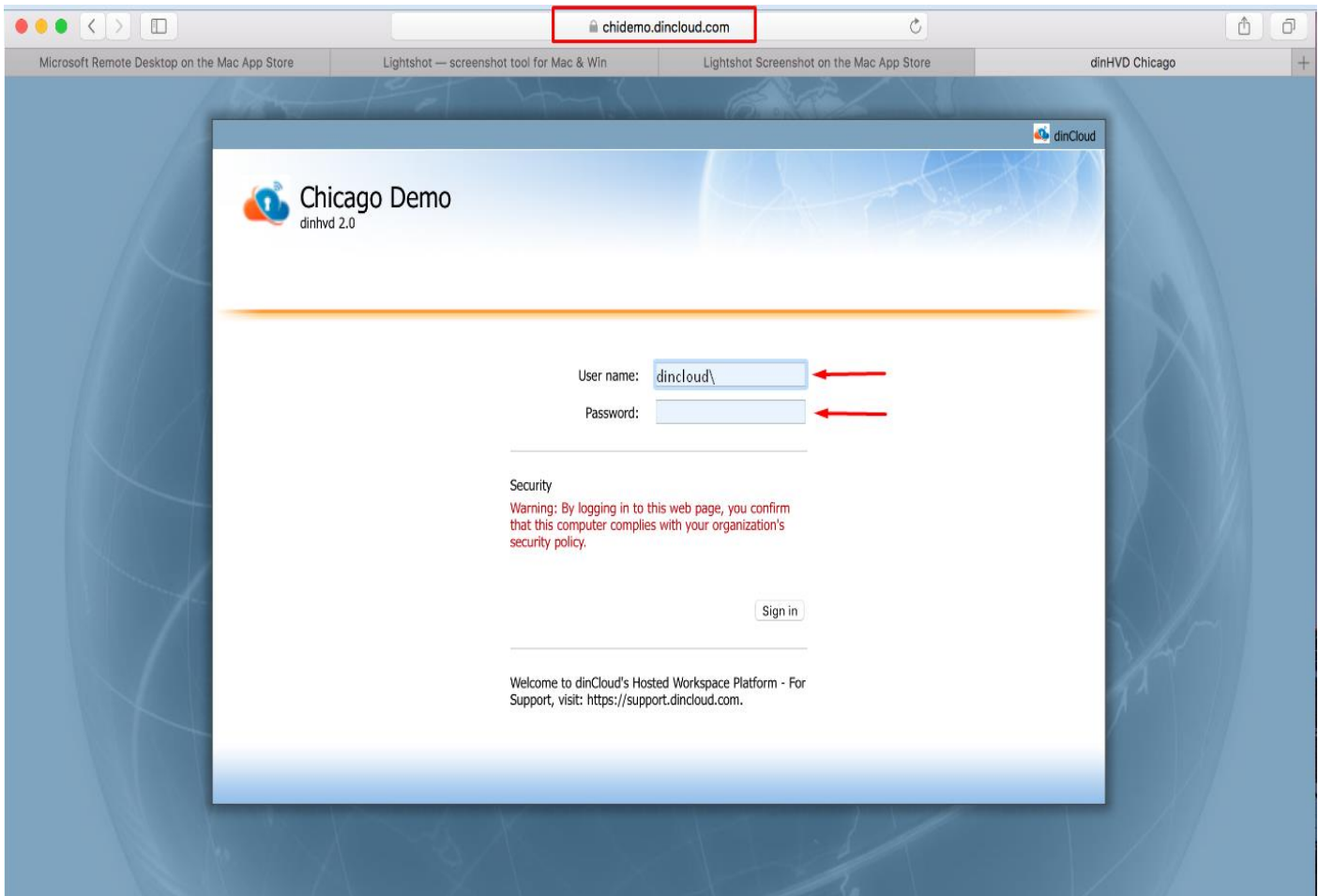
...More





## Connecting to dinWorkspace Using Mac

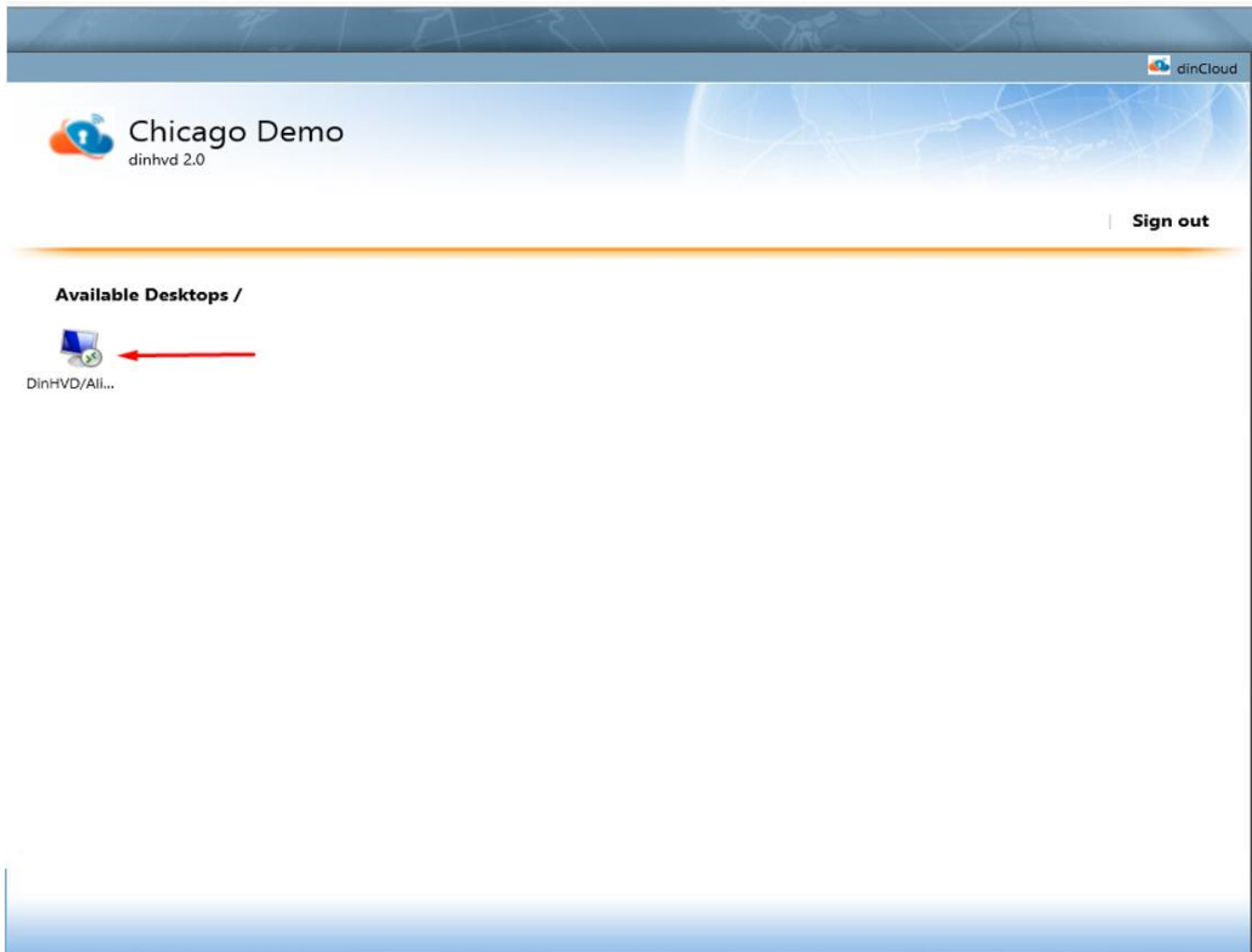
2. Once the installation is complete, open Safari and go to: <https://chidemo.dincloud.com/RDWeb>
3. Now, enter the demo credentials provided by dinCloud





## Connecting to dinWorkspace Using Mac

4. After entering the credentials, you will see the HVD that is assigned to you. Double click to launch the application.



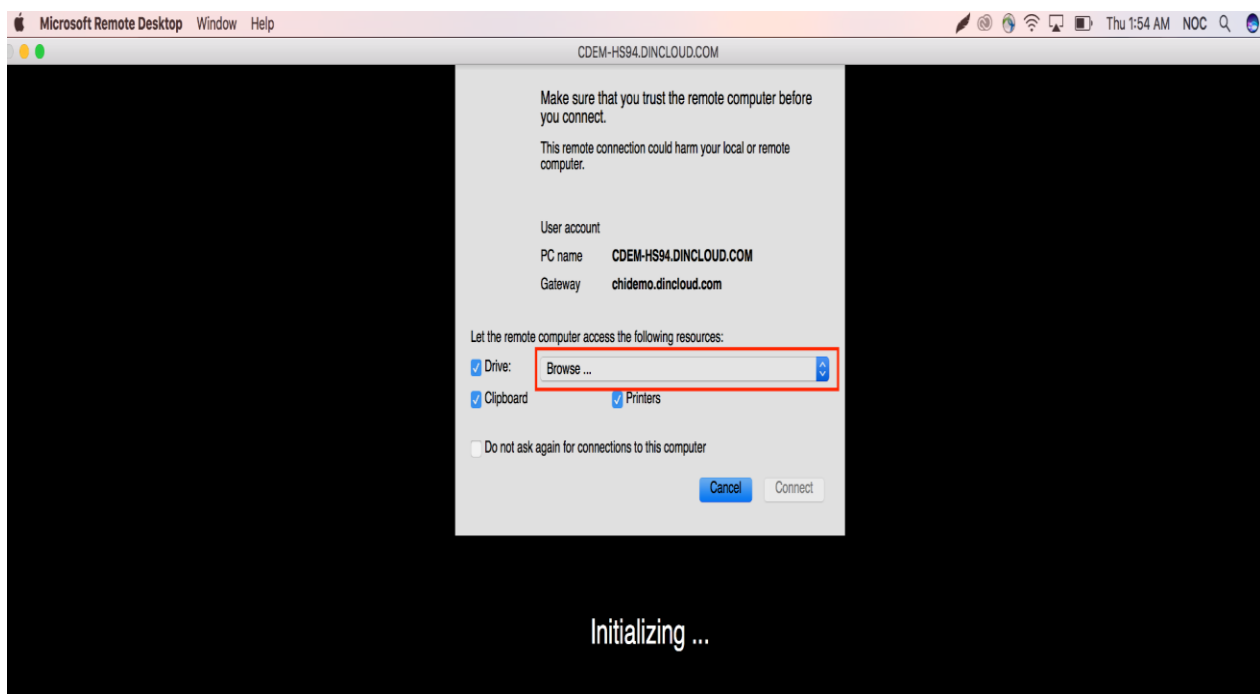


## Connecting to dinWorkspace Using Mac

5. This will start an automatic download for the RDP Client, which you'll find at the bottom-right corner of your screen once it completes.



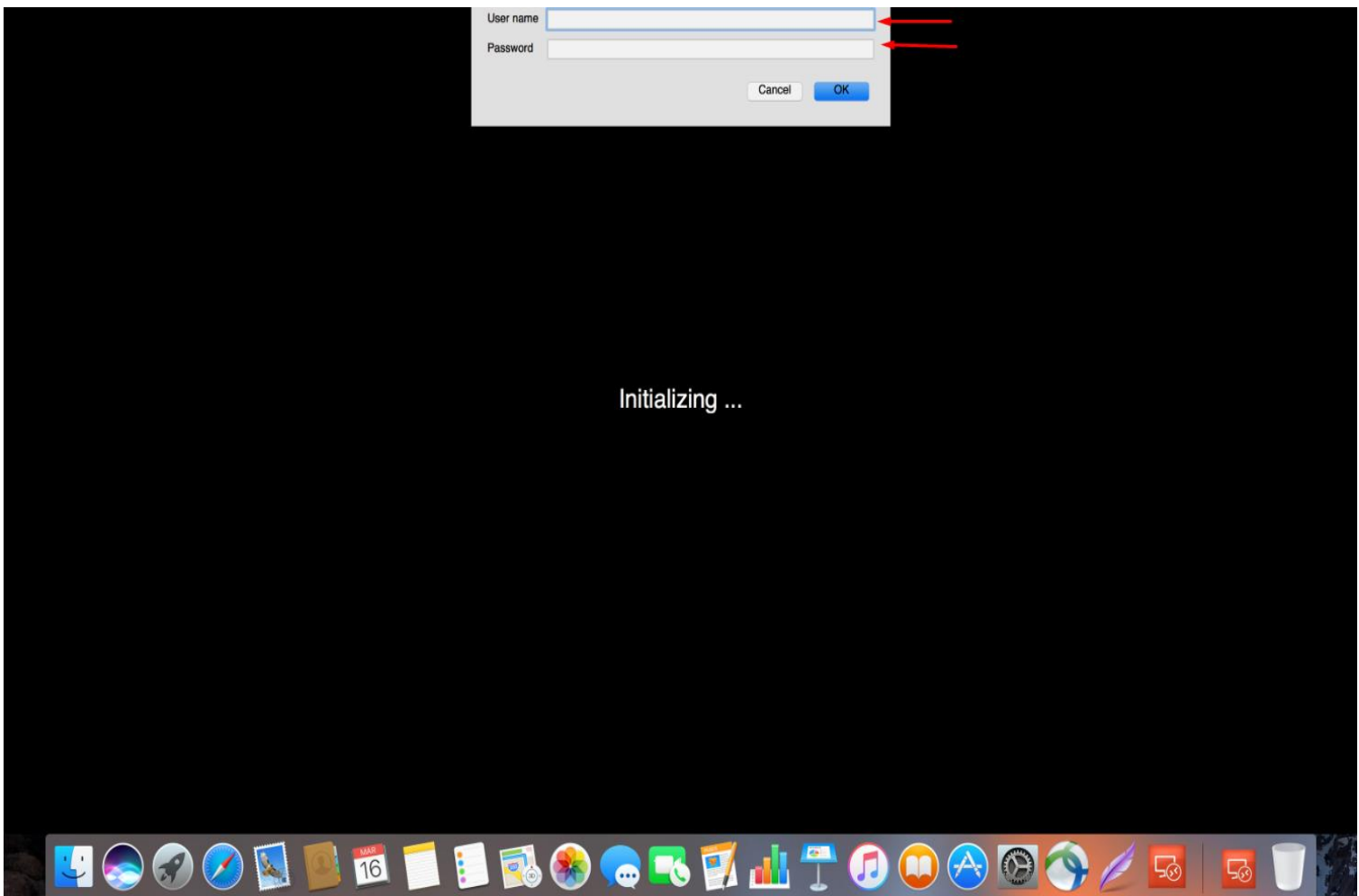
6. A window will pop up asking to replicate the local drives, printers and clipboard. Select accordingly if you want to enable these items on your dinWorkspace. Then hit Connect.





## Connecting to dinWorkspace Using Mac

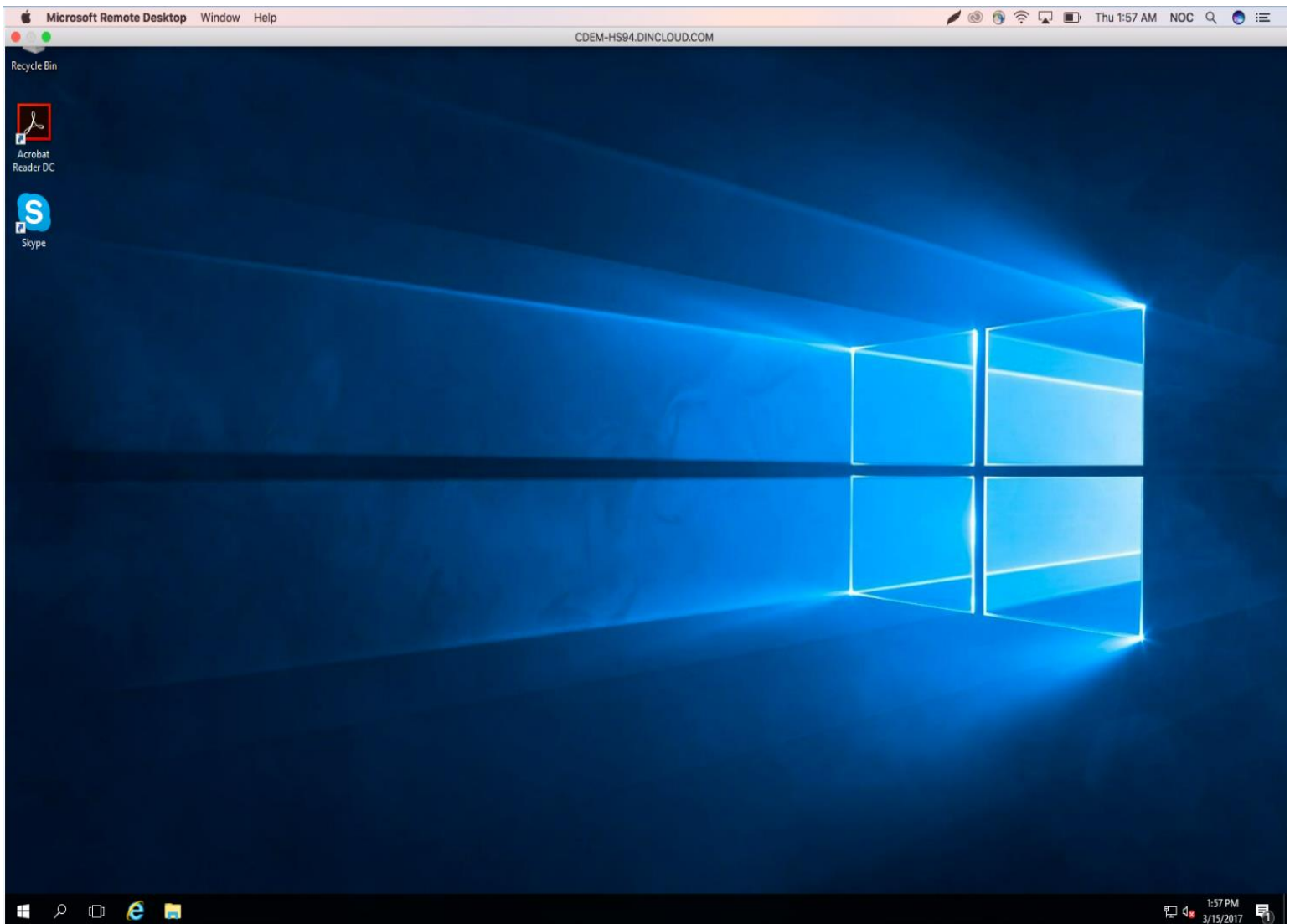
7. Then confirm with the credentials provided by dinCloud and select OK





## Connecting to dinWorkspace Using Mac

8. Now it will negotiate a few protocols and after a few moments you will be connected to your dinWorkspace



### Need Assistance?

Log in to our support portal [support.dinCloud.com](https://support.dinCloud.com) to open a ticket. You can then track the status of your ticket and view our self-service knowledge base.