



www.dincloud.com

dinWorkspace End User Guide



A decorative graphic consisting of five vertical bars of varying heights and widths, colored in shades of blue and white, arranged in a row.

dinWorkspace End User Guide

Connecting Via Android



Connecting to dinWorkspace Via Android

Connecting to

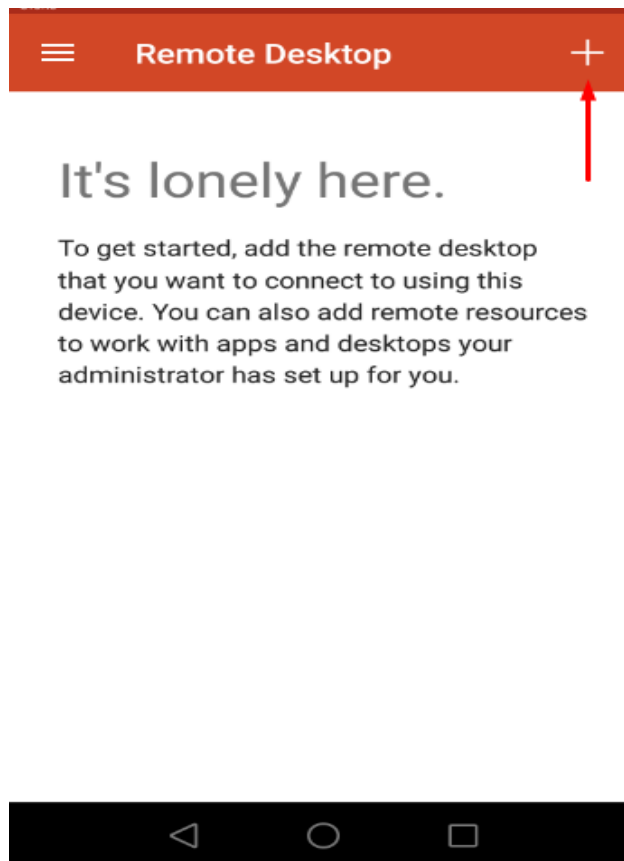
1. Go to the **Google Play store** from your Android phone and install the Microsoft Remote Desktop App





Connecting to dinWorkspace Via Android

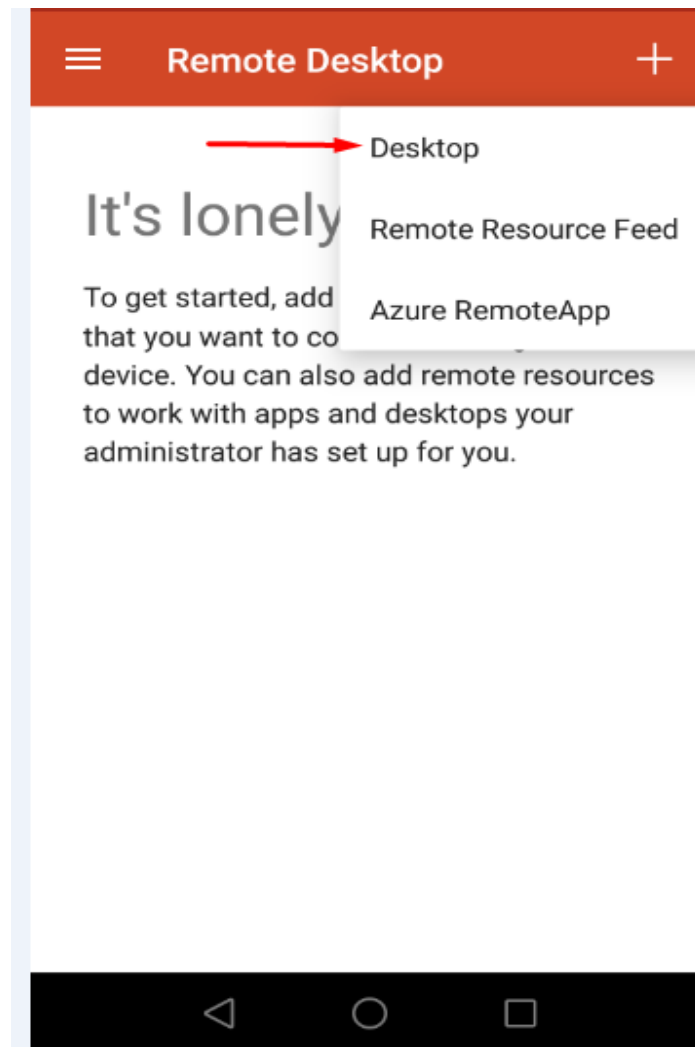
1. Once the installation is complete, open your Microsoft Remote Desktop App and click +





Connecting to dinWorkspace Via Android

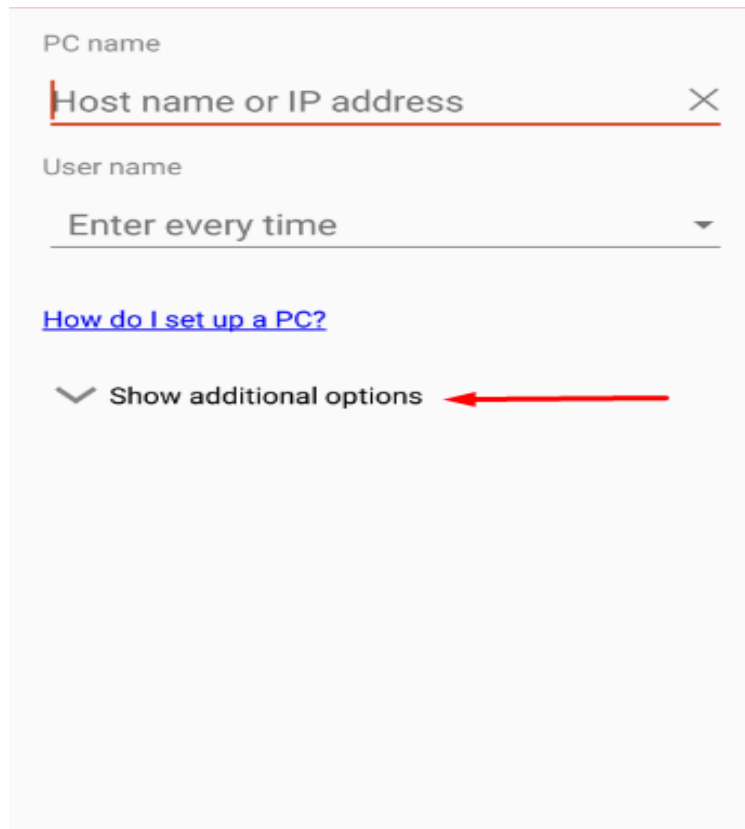
2. After clicking the + menu, select Desktop





Connecting to dinWorkspace Via Android

3. Enter the host name and username provided by dinCloud



PC name

Host name or IP address

User name

Enter every time

[How do I set up a PC?](#)

▼ Show additional options



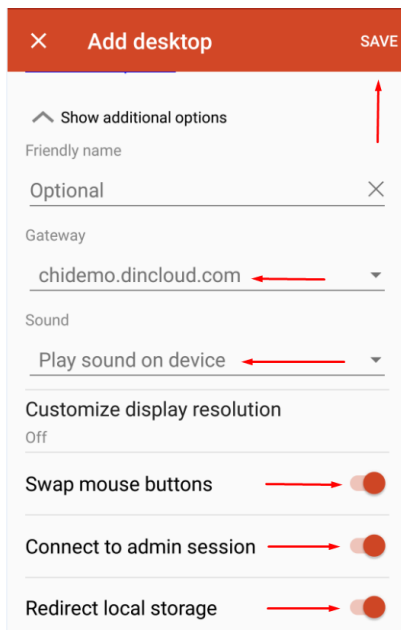
Connecting to dinWorkspace Via Android

4. Now go to the additional options and enter the friendly name “Demo.” For the gateway address, enter: chidemo.dincloud.com.

Enable:

- Swap mouse
- Connect to admin session
- Redirect local storage (optional if you want to map your internal storage/SD card on the HVD)

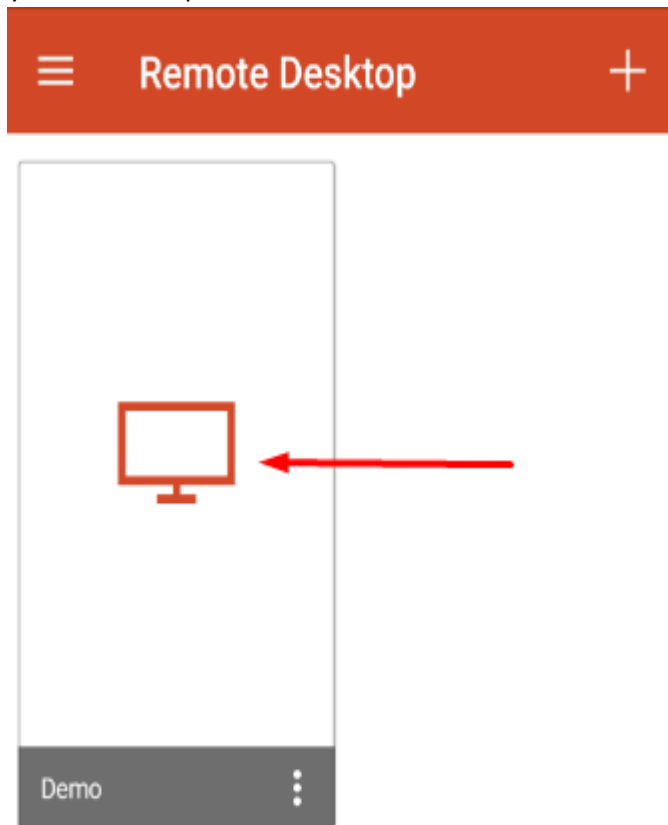
After making all the changes, save the configuration.





Connecting to dinWorkspace Via Android

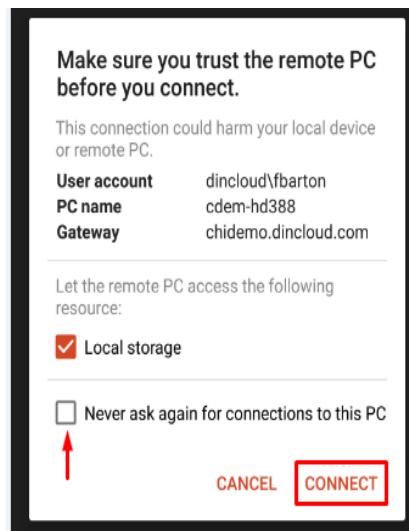
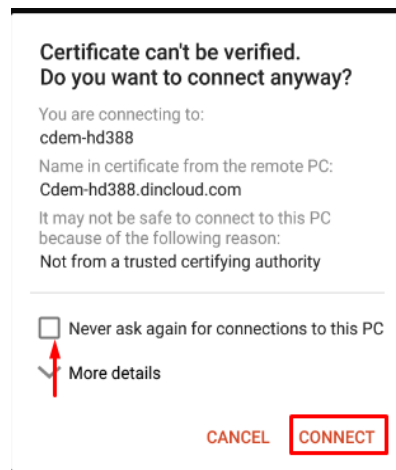
5. After saving the configuration, you will see the remote desktop icon with the name Demo. Click on the app to connect to your dinWorkspace.





Connecting to dinWorkspace Via Android

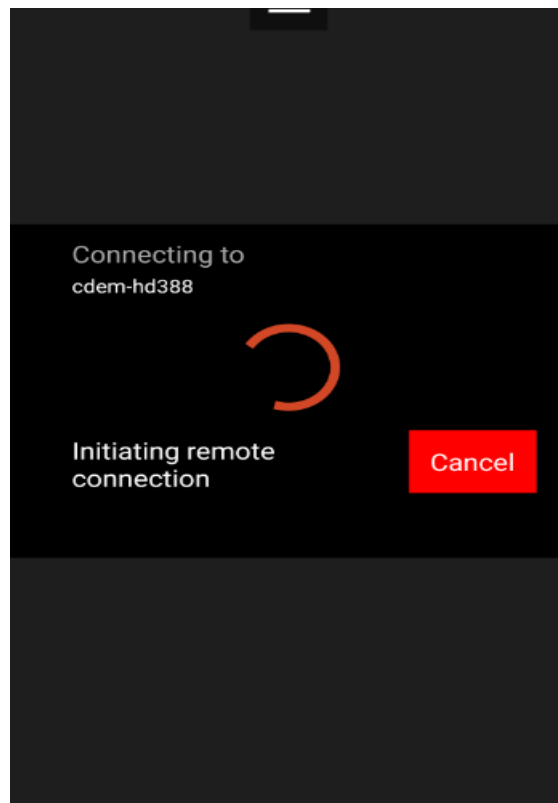
6. Ignore any trust and/or certificate warnings that appear. Select **“Never ask again for connection to this PC”** and click Connect.





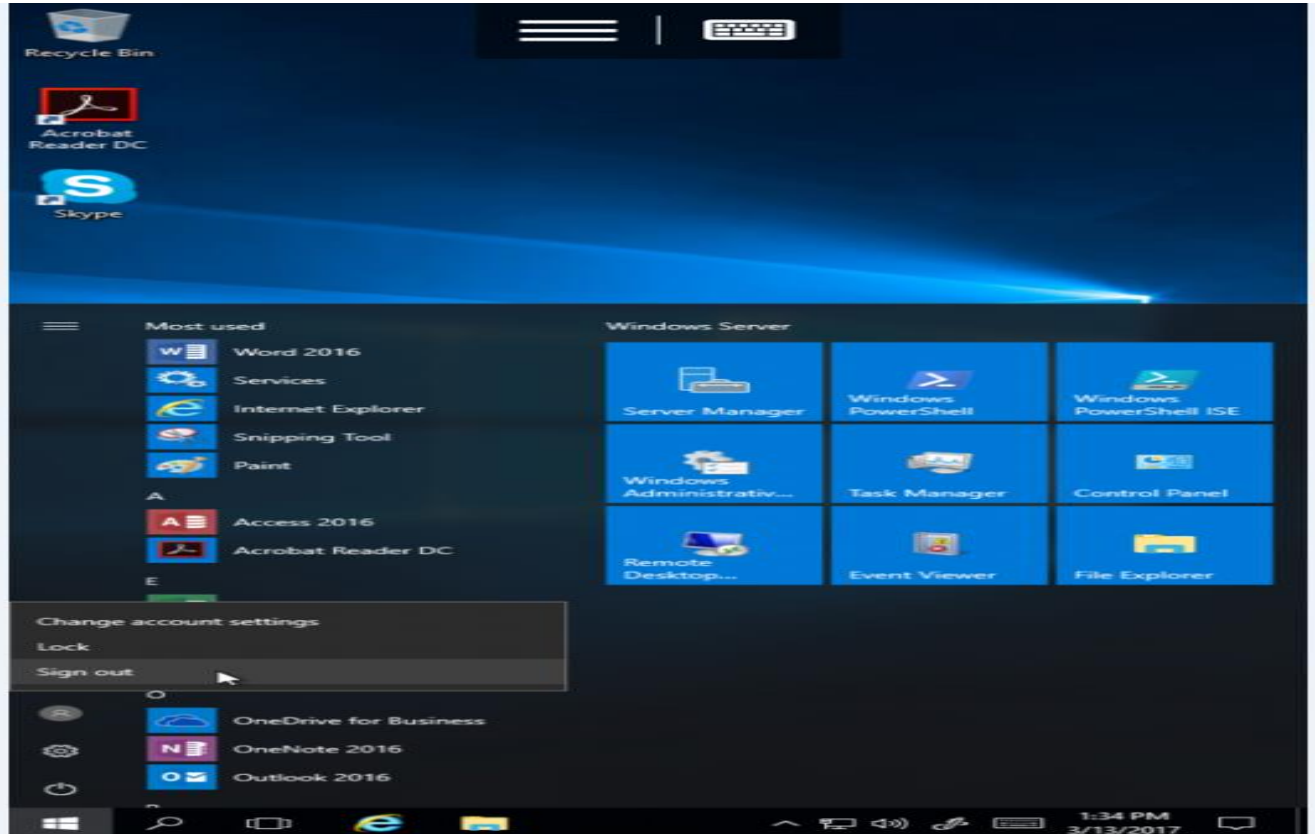
Connecting to dinWorkspace Via Android

7. Now you will see a new window initializing the remote connection. You will be connected to your dinWorkspace momentarily.





Connecting to dinWorkspace Via Android



Need Assistance?

Log in to our support portal support.dinCloud.com to open a ticket. You can then track the status of your ticket and view our self-service knowledge base.