

dinHVD Setup Guide

dinApp User Guide (v1.0)



dinApp for PC

Installing Flash Player

If you don't have Adobe Flash player installed, please click on below link to install Adobe Flash player.

<http://get.adobe.com/flashplayer/?promoid=BUIGP>

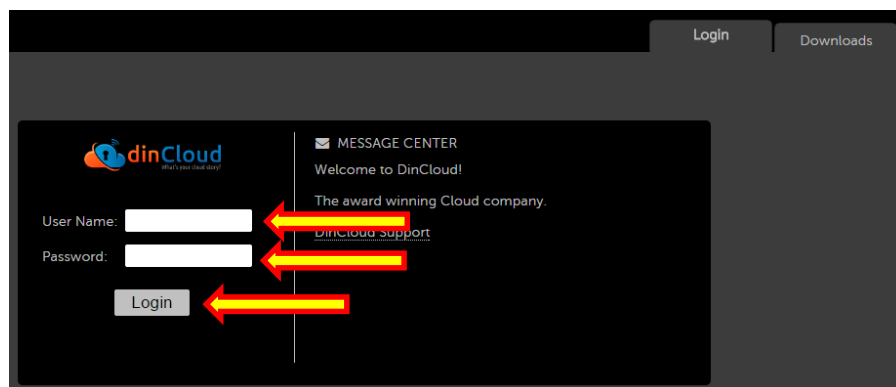
Note: *These settings are for Internet Explorer only. If you are using another web browser, please contact Support Helpdesk. Contact Info is provided at the end of this document.*

To login and to use your Applications, go to the web URL provided to you by your admin:

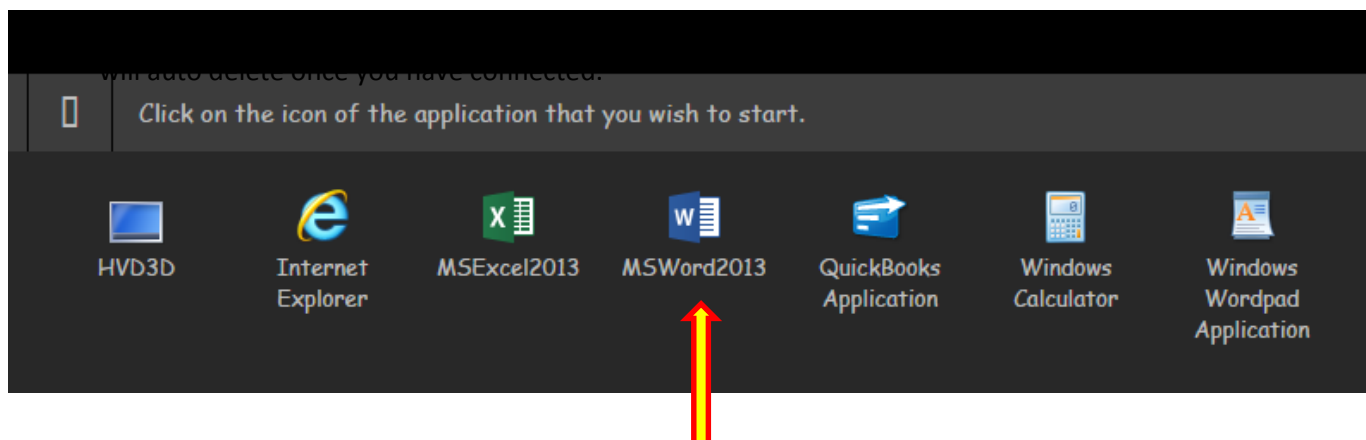
For example: <https://cloud.dincloud.com/cloud>

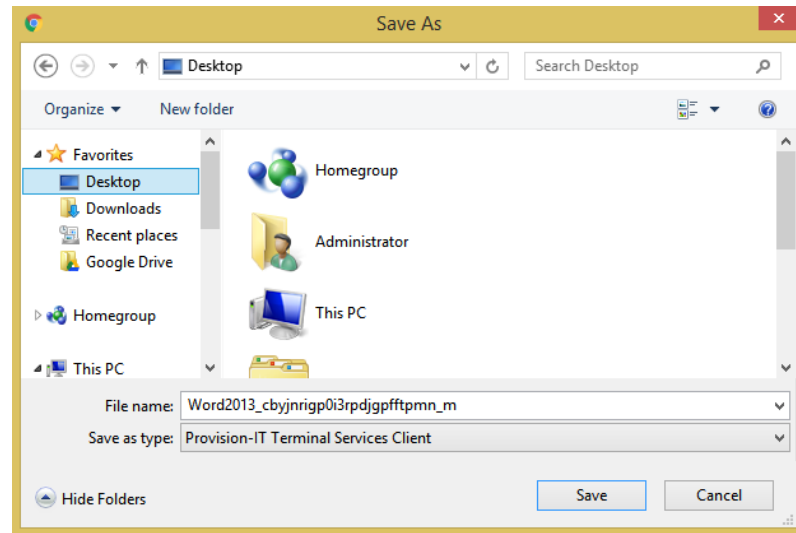
Login with your user credentials

1. Enter your **User Name** and **Password** (provided to you already) and click **Login**.



2. Once you login, click on the application icon to launch the desired Application. In this case, we will launch MS Word.

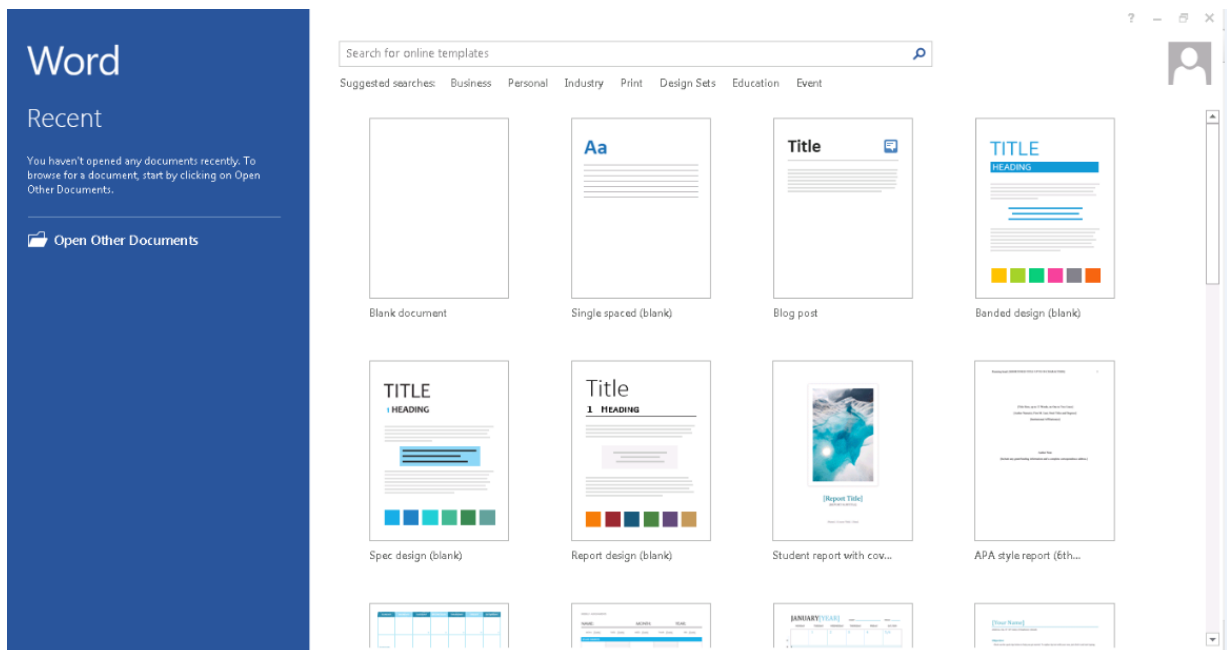




4. If the below file appears, please click on **Open**. Skip this step if your application automatically opens.



5. This should launch your application.



Once launched, you can start using your dinApp. You can now launch other apps that are published. Please note

that different apps launch in different ways. For example, some apps may ask you for a password, depending on how the application is set up by the administrator.

Please feel free to contact dinCloud support at support@dincloud.com or call us at 424-286-2300. You can also open a ticket from support.dincloud.com

System Requirements

The following table outlines the minimum system requirements for installing and running the vWorkspace Connector for Windows

Platform	1 Ghz or higher Intel Pentium compatible CPU
System Memory (RAM)	512 MB minimum, 1 GB or more recommended
Hard Disk Space	20 MB or more of free disk space
Operating System	<p>The Connector for Windows can run on a client access device with any of these operating systems:</p> <ul style="list-style-type: none">• Microsoft Windows XP, Service Pack 3 (x86 edition)• Microsoft Windows 7, Service Pack 1 (x86 and x64 editions)• Microsoft Windows 8 (x86 and x64 editions)• Microsoft Windows 8.1 (x86 and x64 editions)• Microsoft Windows Embedded Standard 2009• Microsoft Windows Embedded Standard 7 and 8
Flash Acceleration	<p>If using Flash Acceleration, you must have one of the following versions of Adobe Flash Player installed on the Virtual Desktop:</p> <ul style="list-style-type: none">• Adobe Flash Player 14 <p>Flash Acceleration works with Internet Explorer versions 10 and later.</p> <p>NOTE: The version (major versions) installed in the Virtual Desktop must match the version that is installed on the Client Access Device. If the versions do not match, the flash content plays without Flash Acceleration, through RDP.</p>